

15.6 inch Panel PC ViTAM-816R Stainless steel housing



- 15.6" TFT LCD, 1,366 x 768 pixels
- Resistive touch
- Processor: Intel Celeron N2930 1.83 GHz
- IP66/IP69K stainless steel housing with M12 connections
- Flush frame design
- Fanless cooling system
- Reading angle horizontal 160°, vertical 160

<https://www.wachendorff-prozesstechnik.de/ViTAM-816R>

Description

The ViTAM-8 series is based on an Intel Celeron N2930 1.83 GHz processor.

The industrial panel PCs in this series are available in display sizes from 10.1" to 24", with either projected capacitive or resistive touch. The projected capacitive touch enables multi-touch operation with a corresponding operating system. If pressure-sensitive operation is required (e.g. with gloves), the resistive touch is the right choice. The front panels are absolutely flush with the stainless steel housing (type 304). The housing is designed in IP69K (incl. IP66) with M12 connection options. An on/off button is also integrated on the side of the Panel PC. The unique fanless thermal design of the robust stainless steel housing enables effective temperature control. The ViTAM IPCs can be optionally equipped with a high-brightness LCD and/or optical bonding for an outstanding display, even under the most difficult conditions. In addition, expansion cards can be integrated for additional interfaces, RFID or even the supply of the panel PC via Power over Ethernet (POE).

Product details

Power supply:	9 VDC to 36 VDC
Power consumption:	max. 24 W
Display:	15.6" TFT LCD
Resolution:	1,366 x 768 pixels
Aspect ratio:	16:9
Brightness:	300 cd/m²
Colors:	16.7 million
Contrast:	500:1
Reading angle:	H: 160° / V: 160°
Touch screen:	resistive
Processor:	Intel Celeron N2930 1.83 GHz
System Chipset:	SoC
RAM:	4 GB DDR3L RAM 1,600 MHz onboard (optional 8 GB)
SSD/HDD:	1 x 2.5" HDD/SSD (standard 32 GB SSD)
Additional memory:	1 x SD slot

Interfaces:	USB: 1 x M12 8-pin (2 x USB 2.0 via cable) with waterproof termination Serial: 1 x M12 8-pin for COM 1 (RS-232/-422/485, default RS-232) with waterproof termination Ethernet: 1 x M12 A-code, 8-pin, socket (female) for Gigabit Ethernet with waterproof termination Other: 1 x On/Off button (on the side, waterproof) Power supply: 1 x M12 3-pin, 1 x On/Off switch (rear)
Possible extension:	2 x M12
Available extensions:	1 x PoE module (IEEE 802.3af/at) via TB-528E1U2POE 2 x USB 2.0 module via TB-528U2 1 x USB 3.0 via cable 1 x LAN via cable 1 x COM port via TB-528C1 1 x CAN via TB-528CAN2 1 x M12 12-pin VGA 1 x HDMI
Expansion slots:	1 x Mini PCIe for Wifi/BT (optional) 1 x RFID (front side, see options)
Housing:	Stainless steel (type 304, optionally 316)
Assembly:	VESA 75 x 75; yoke mount (swivel fork mount)
Protection class:	IP66/IP69K
Weight:	approx. 5.2 kg
Dimensions (WxHxD):	440 mm x 290 mm x 55 mm
Ambient conditions:	Operation: 0 °C to +50 °C ; Storage: -30 °C to +70 °C 10% to 90 %rH, non-condensing.
Certifications:	CE/FCC class A
Operating systems:	Windows® 10 IoT Linux

Options:	HDMI VGA (M12, 12-pin) Wifi/BT (via Mini PCIe) RFID module (for front-side use, Mifare 13.56 MHz) PoE module (IEEE 802.3af/at) via TB-528E1U2POE 2 x USB 2.0 module via TB-528U2 1 x USB 3.0 via cable 1 x LAN Gigabit Ethernet via cable 1 x COM port via TB-528C1 1 x CAN via TB-528CAN2 IP65 Waterproof Power Adapter Optical bonding High Brightness LCD (1000 cd/m2) Stainless steel (type 316) Linux, Android, Windows
Scope of delivery:	Device 1 x M12 plug-in power supply 1 x M12 USB cable (1x M12 to 2x USB 2.0)
Customs tariff number:	84715000
Manufacturer:	Aplex Technology Inc.

Products Order no.

ViTAM-816R	15.6" resistive touch panel PC, stainless steel
------------	---

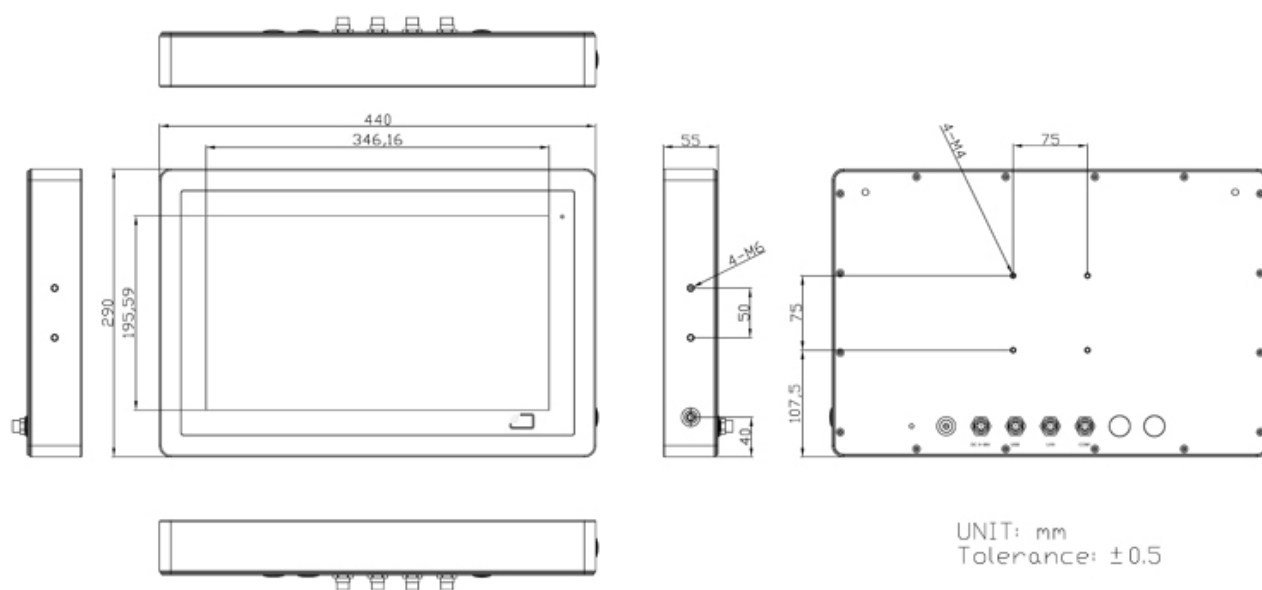
Accessories Order no.

PPC-D-103	VESA stand stainless steel (type 304) 75 x 75 / 100 x 100
PPC-Y-116	Stainless steel U-shaped monitor holder for ViTAM IPC and displays
PPC-Y-116S	Stainless steel U-shaped monitor holder for ViTAM IPC and displays
ETHSWG5C	5-way Ethernet switch, unmanaged
KABM12ETH3	M12-A to RJ45, shielded, L=3m
KABM12ETH5	M12-A to RJ45, shielded, L=5m
KABM12ETH10	M12-A to RJ45, shielded, L=10m
CKI.68R17.R	Built-in keypad for rear mounting, 68 keys
CKI.85R15.F-TI	Built-in keyboard for front installation, 85 keys, integrated trackball and embossed foil
CKI.85R15.R-TI	Built-in keyboard for rear mounting, 85 keys, integrated trackball
DGI.64Q12.F	Built-in keypad for front installation, 64 keys
DGI.64Q12.F-TI	Built-in keyboard for front installation, 64 keys, integrated stainless steel trackball
DGI.81R17.F-TI	Built-in keyboard for front installation, 81 keys, integrated trackball
DGI.98R17.F	Built-in keyboard for front installation, 98 keys, keypad/number pad with integrated trackball

DGI.98R17.F-TI	Built-in keyboard for front installation, 98 keys, keypad/number pad with integrated trackball
FIT.105E16.F-TP	Built-in keyboard for front installation, 105 keys, integrated touchpad
FIT.105E16.R-TI	Built-in keyboard for rear mounting, 105 keys, integrated trackball
FIT.105E16.T-TI	Desktop keyboard, 105 keys, integrated trackball
FIT.68E16.F-TI	Built-in keyboard for front installation, 68 keys, integrated trackball
FIT.68E16.R-TI	Built-in keyboard for rear mounting, 68 keys, integrated trackball
FIT.68E16.T-TI	Compact keyboard, desktop version, 68 keys, integrated trackball
FIT.68E16.T-TP	Desktop keyboard, 68 keys, integrated touchpad

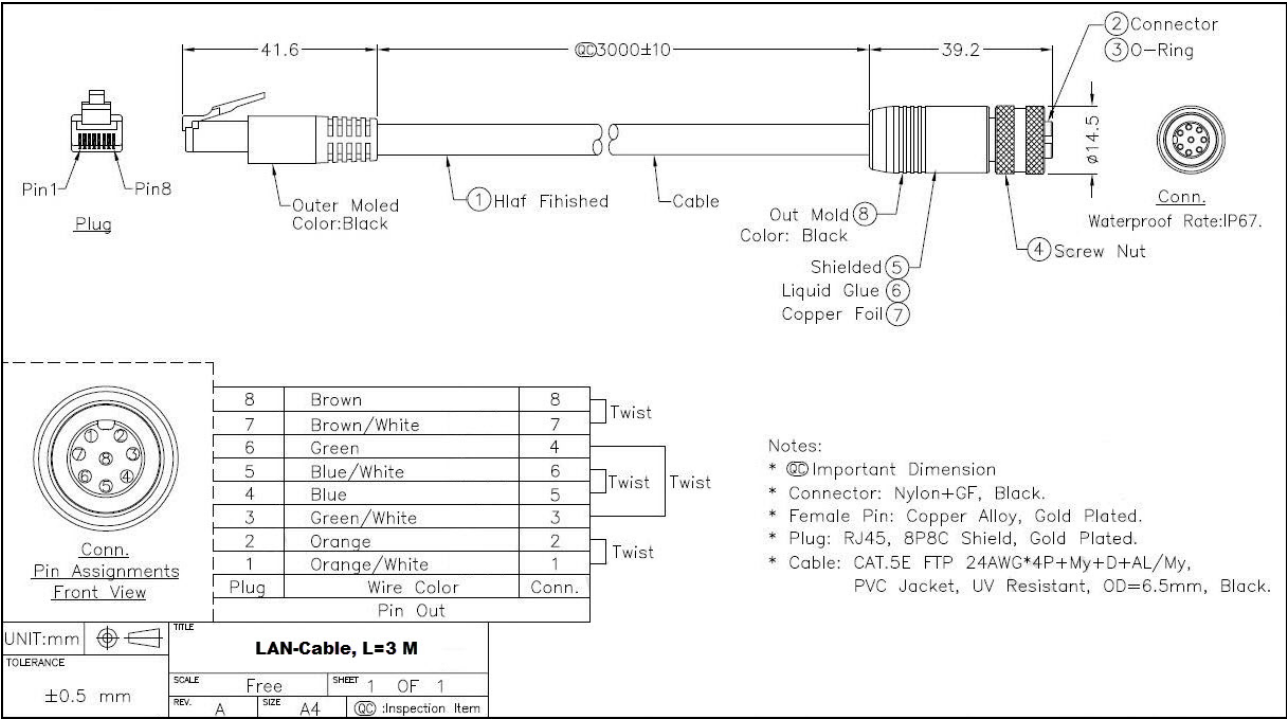
Drawings

Dimensions (mm):



Drawings

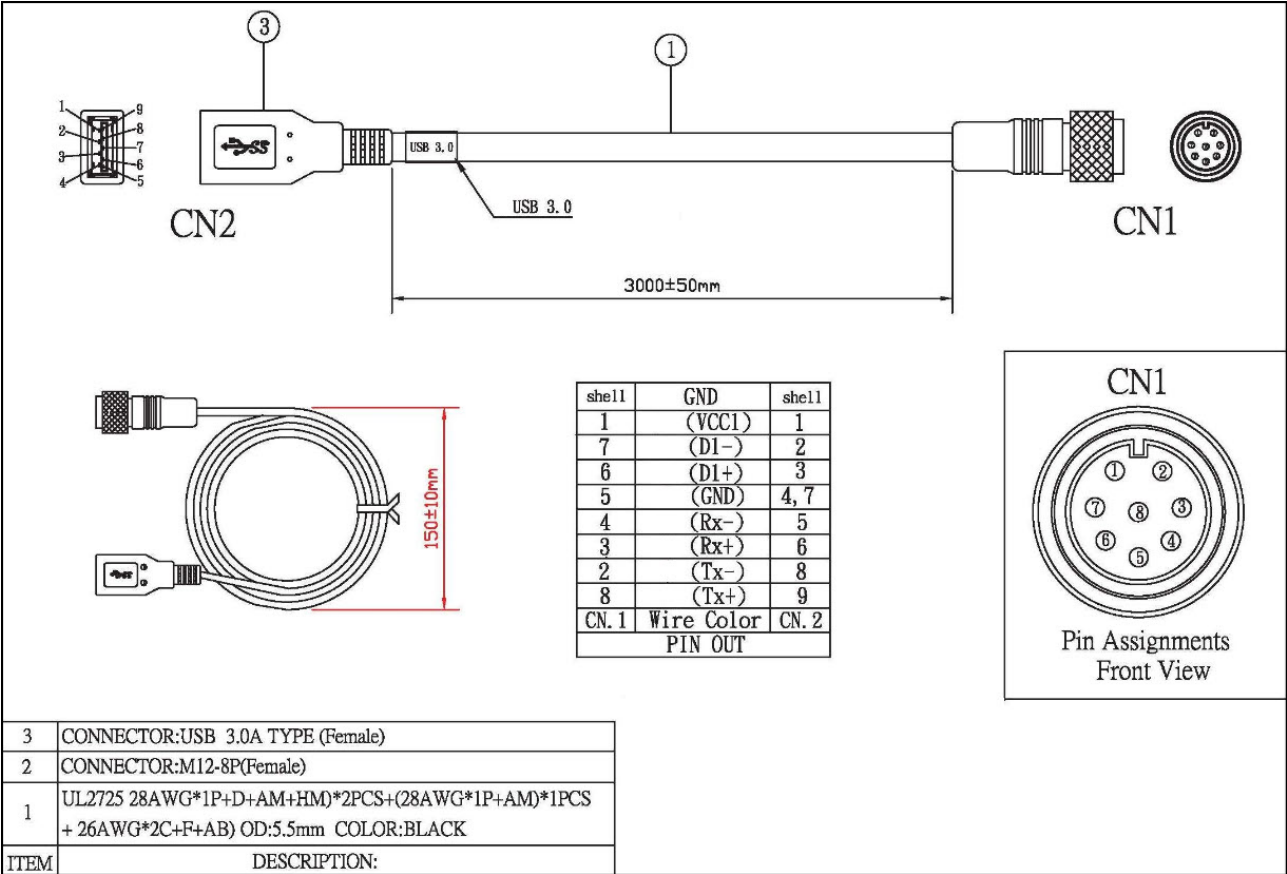
LAN cable



(may not be included in the scope of delivery)

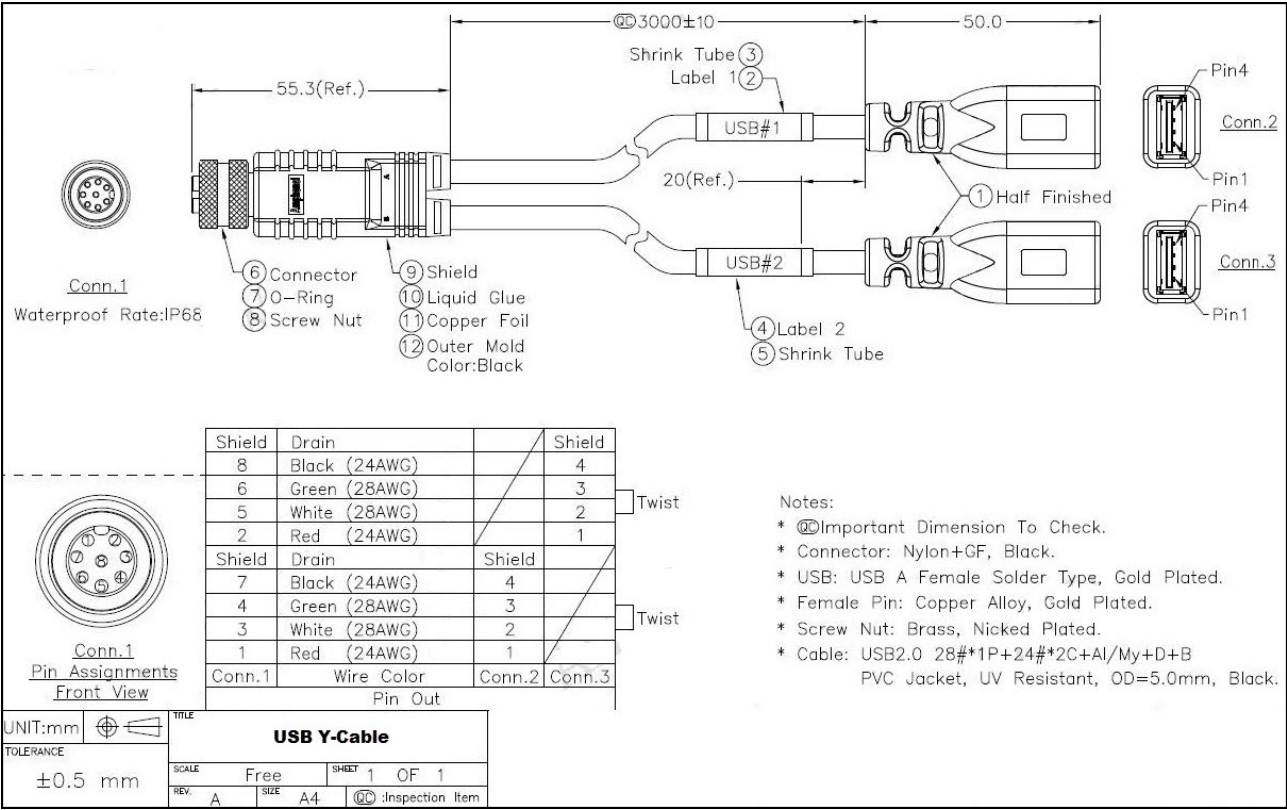
Drawings

USB 3.0 cable



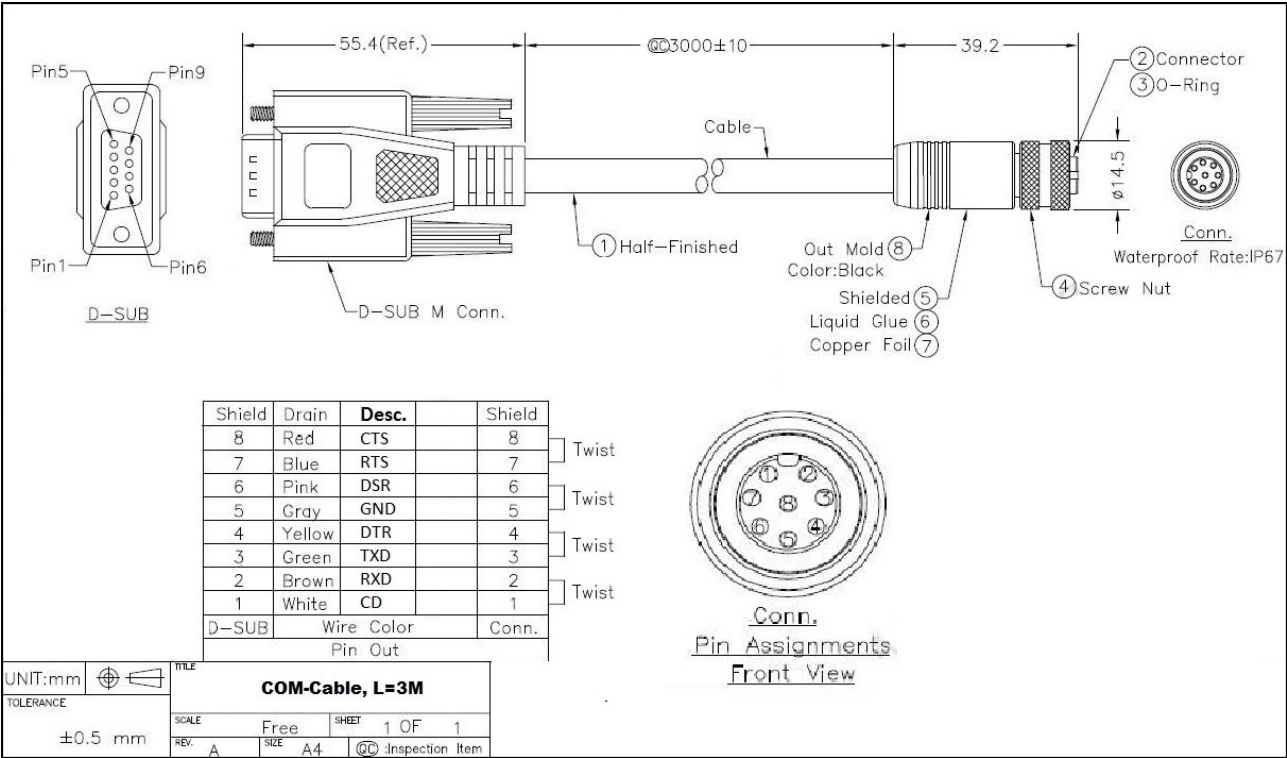
(may not be included in the scope of delivery)

Drawings
USB Y-cable



(may not be included in the scope of delivery)

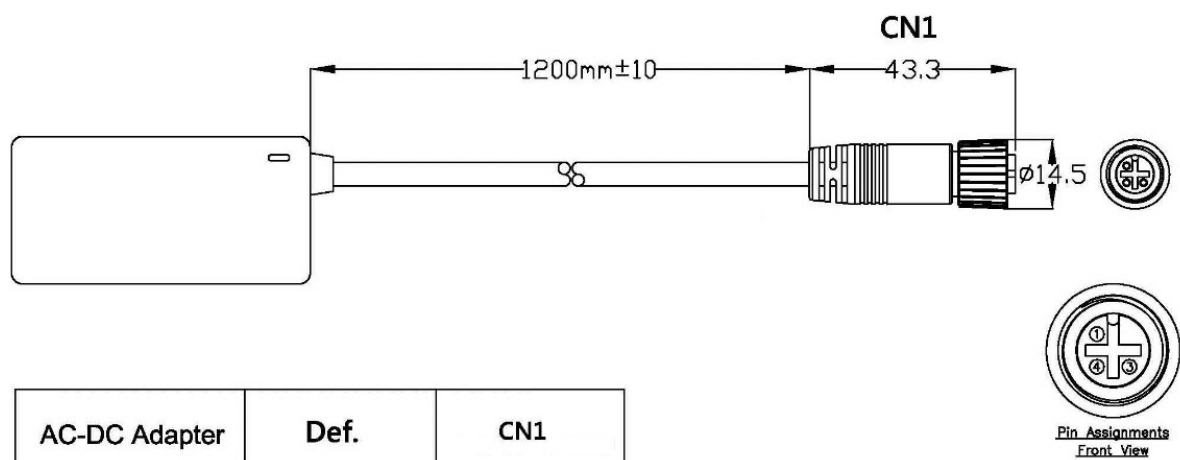
Drawings
COM cable



(may not be included in the scope of delivery)

Drawings

Power adapter



(may not be included in the scope of delivery)



Wachendorff Prozesstechnik GmbH & Co. KG
Industriestrasse 7 • 65366 Geisenheim
Germany

Phone: +49 (0) 67 22 / 99 65 - 20
E-Mail: wp@wachendorff.de
www.wachendorff-prozesstechnik.de

