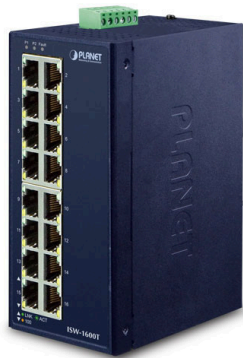


## Ethernet switch, 16 ports, - ETHSW160T



- 16x 10/100BaseT(X)
- Unmanaged / Plug and Play
- IEEE 802.3, IEEE 802.3u, IEEE 802.3x, IEEE 802.1p
- Data throughput 2.38 Mpps @ 64 bytes
- Supports jumbo frames up to 16000 bytes
- Redundant power input
- Operating temperature -40 °C to +75 °C
- Protection class IP30

<https://www.wachendorff-prozesstechnik.de/en/ethsw160t>

### Description

The ETHSW160T is a very compact and robust Industrial Ethernet switch with 16x 10/100BaseT(X). In addition to IEEE 802.3, IEEE802.3u and IEEE802.3x, CoS according to IEEE 802.1p is also supported. Four queues (priority classes) are available per port for this purpose. The compact housing, certified to protection class IP30, was developed for use in harsh and demanding industrial environments in which large temperature differences and physical loads are known to occur.

The ETHSW160T is an unmanaged and plug and play switch with a non-blocking/wirespeed Layer 2 switching engine. Secure transmission is guaranteed thanks to the Store and Forward operating mode. The switchable Flooding Storm Control function protects against unwanted occupation of the available transmission rate by broadcast or multicast data frames.

With Auto Power Savings and the IEEE 802.3az Energy Efficient Ethernet (EEE) protocol, the ETHSW160T can automatically detect the cable connection status and network traffic and adjust its power consumption accordingly. With less device activity, the switch consumes less power and thus achieves higher energy efficiency.

Operating temperature:	-40 °C to +75 °C (cold start at -40 °C)
Storage temperature:	-40 °C to +85 °C
Humidity:	5 % to 95 % rH (non-condensing)
FCC/EMI:	FCC Part 15 Class A/CE
Vibration:	IEC60068-2-6
Shock:	IEC60068-2-27
Free fall:	IEC60068-2-32
RoHS and WEEE:	compliant
Protection class:	IP30
Execution:	Robust metal housing
Dimensions (WxHxD):	41 mm x 115 mm x 70 mm
Weight:	305 gram
Assembly:	DIN rail or wall mounting
Scope of delivery:	Device, terminal strip connector, DIN rail holder, wall mounting bracket, installation sheet
Manufacturer:	Planet Technology Corporation

### Product details

Operating mode:	Store and Forward
Switching engine:	wire-speed / non-blocking
EtherNet standards:	<ul style="list-style-type: none"> <li>• IEEE 802.3 (10BaseT)</li> <li>• IEEE 802.3u (100BaseTX)</li> <li>• IEEE 802.3ab (1000BaseTX)</li> <li>• IEEE 802.1p (CoS)</li> <li>• IEEE 802.3x (Full Duplex) and Back-Pressure (Half Duplex)</li> <li>• IEEE 802.3az Energy Efficient Ethernet (EEE)</li> <li>• Jumbo Frames 9K</li> </ul>
RJ45 ports:	8x 10/100/1000BaseT(X)
RJ45 - Speed:	Auto-negotiation (10/100/1000 Mbit/s)
RJ45 - Duplex:	Half or full duplex
RJ45 connection:	MDI/MDIX Auto-Crossover
MAC table size:	4K
Display:	2x Power status: P1, P2 - Power supply status 8x Ethernet port status: Link & Speed
Power supply:	Redundant input terminal block connector with reverse polarity protection
Voltage range:	9 to 48 VDC / 24 V AC
Power consumption:	2.88 watts

### Products Order no.

ETHSW160T	16-way Ethernet switch, unmanaged
-----------	-----------------------------------

### Accessories Order no.

DRS4-24A	Power supply unit for DIN rail, 85 to 264 VAC, 24 VDC 4.2 A, screw terminal
CPNLRJ45	RJ45 to RJ45 panel connector / panel front IP 68
KABETH10	Patch cable, RJ45 UTP CCA, CAT5e white, 0.3 m
KABETH11	Patch cable, RJ45 UTP CCA, CAT5e white, 1 m
KABETH12	Patch cable, RJ45 UTP CCA, CAT5e white, 2 m



Wachendorff Prozesstechnik GmbH & Co. KG  
Industriestrasse 7 • 65366 Geisenheim  
Germany

Phone: +49 (0) 67 22 / 99 65 - 20  
E-Mail: [wp@wachendorff.de](mailto:wp@wachendorff.de)  
[www.wachendorff-prozesstechnik.de](http://www.wachendorff-prozesstechnik.de)

