

Gateway Modbus TCP Server / Modbus RTU Master HD67507-XX-XXX



Abbildungen ähnlich

- 1x 10/100BaseT; automatic detection for Modbus TCP
- Configurable gateway with SW67507
- Galvanic 3-way isolation between serial/Ethernet and power supply
- Bidirectional data exchange between Modbus RTU and Modbus TCP
- High temperature range from -40 °C to +85 °C
- Transmission of project planning via Ethernet

<https://www.wachendorff-prozesstechnik.de/en/HD67507-XX>

Description

The configurable gateway HD67507-XX-XXX enables communication between a serial and an Ethernet-based Modbus system. The gateway can be used either as a transparent gateway or as a data converter with an adjustable translation table. As a Modbus RTU master, the gateway can independently acquire data from several participants and make it available to a higher-level system. Of course, data can also be transmitted in the opposite direction. Transferring the gateway configuration using the SW67507 software via the RS232 interface and the Ethernet port is very quick and easy. The DIN rail mounting and the removable screw terminals (HD67507-A1) ensure quick and safe installation as well as problem-free wiring of the device.

Product details

Interfaces:	<p>HD67507-A1: 1x Ethernet port (RJ45 socket) 1x RS232 (Sub-D plug, 9-pin) 1x RS485 (removable screw terminal, 3-pin)</p> <p>HD67507-B2: 1x Ethernet port (RJ45 socket) 1x RS232 (Sub-D plug, 9-pin) 1x RS485 (screw terminal, 3-pin)</p> <p>HD67507-Slim-232: 1x Ethernet port (RJ45 socket) 1x RS232 (screw terminal, 3-pin)</p> <p>HD67507-Slim-485: 1x Ethernet port (RJ45 socket) 1x RS485 (screw terminal, 3-pin)</p>
Serial data rate:	Max. 12 Mbps
LED:	<p>HD67507-A1: 4x signal display for supply and communication</p> <p>HD67507-B2 and HD67507-Slim-XXX: 5x signal display for supply and communication</p>
Supply:	<p>HD67507-XX-XXX: 12 to 35 VDC, 3.5 Watt 8 to 24 VAC, 3.5 VA, 50/60 Hz</p>
Power consumption:	3.5 Watt / VA

Software:	Free configuration software SW67507 for parameterization of the device
Supported function codes:	Fully transparent
Operating temperature:	-40°C to +85°C
Housing:	Previous housing: PVC New housing: PC-ABS
Dimensions (WxHxD)	<p>HD67507-A1: Previous housing: 23 mm x 107 mm x 120 mm New housing: 22.5 mm x 90.7 mm x 123 mm</p> <p>HD67507-B2: 71 mm x 95 mm x 60 mm</p> <p>HD67507-Slim-XXX: 35 mm x 95 mm x 60 mm</p>
Weight:	approx. 200 g
Fastening:	Mounting on the DIN rail
Note:	The article description should always be viewed from the perspective of the gateway.
Customs tariff number:	8517 62 00
Manufacturer:	ADFweb.com S.r.l.

Products Order no.

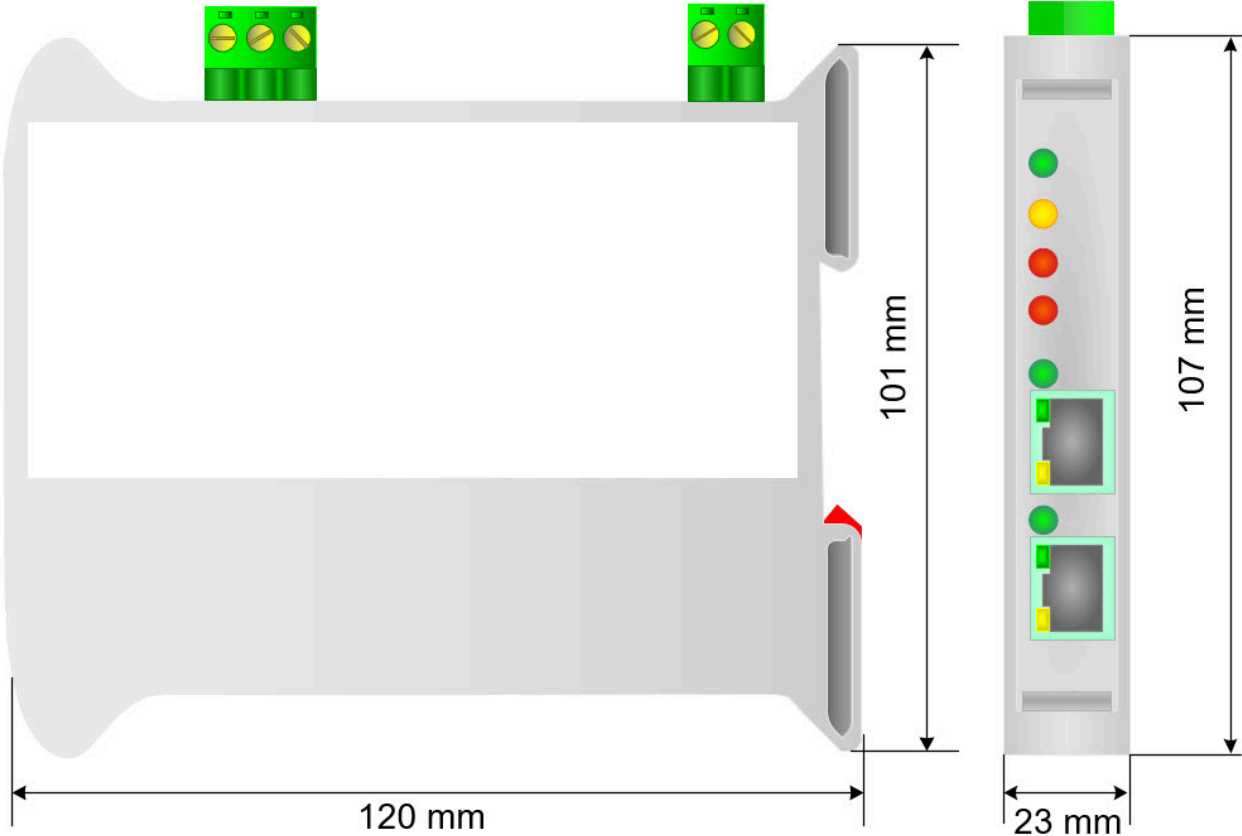
HD67507-A1	Gateway Modbus TCP Server (Slave) / Modbus RTU Master
HD67507-B2	Gateway Modbus TCP Server (Slave) / Modbus RTU Master
HD67507-Slim-232	Gateway Modbus TCP Server (Slave) / Modbus RTU Master
HD67507-Slim-485	Gateway Modbus TCP Server (Slave) / Modbus RTU Master

Accessories Order no.

DRS4-24A	Power supply unit for DIN rail, 85 to 264 VAC, 24 VDC 4.2 A, screw terminal
AMR4-24	DIN rail power supply unit for building automation, 90 to 264 VAC, 24 VDC, 2.5 A
KABETH10	Patch cable, RJ45 UTP CCA, CAT5e white, 0.3 m
KABETH11	Patch cable, RJ45 UTP CCA, CAT5e white, 1 m
KABETH12	Patch cable, RJ45 UTP CCA, CAT5e white, 2 m
AC34107	Null modem cable, socket/socket, 3 m long

Drawings

Dimensions HD67507-A1 (previous housing)



Gehäuse: PVC
Gewicht: ca. 200g

Drawings

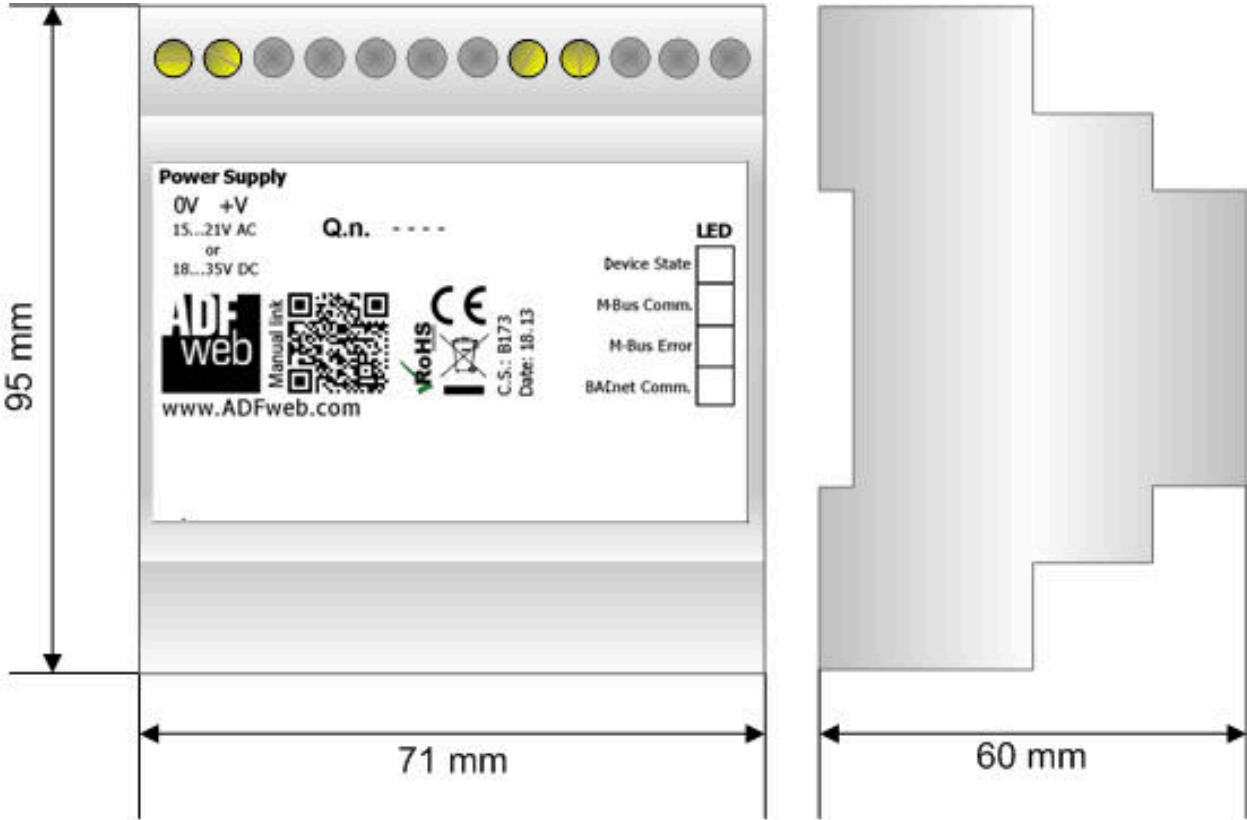
Dimensions HD67507-A1 (new housing)



Gehäuse: PC-ABS
Gewicht: ca. 200g

Drawings

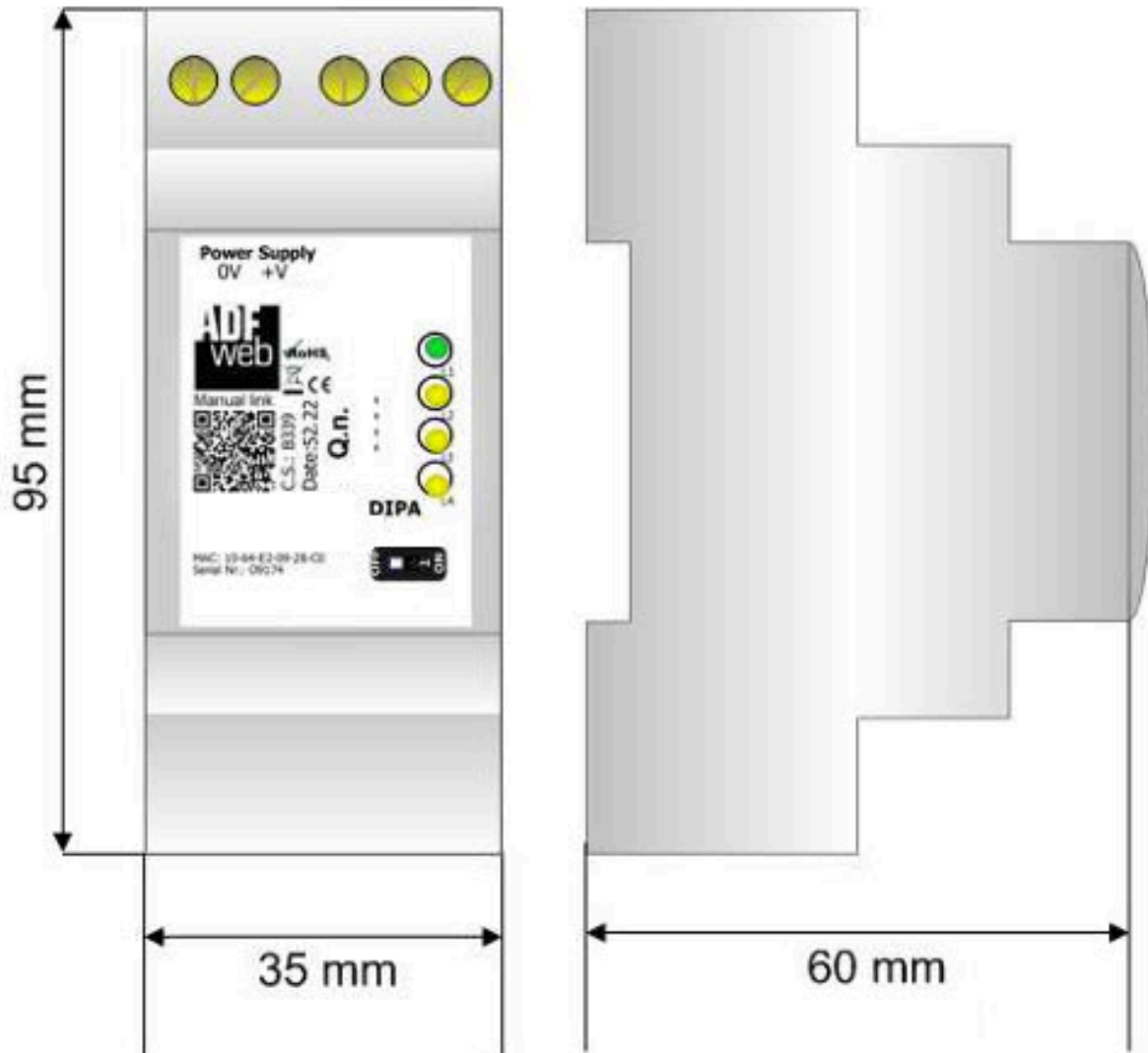
Dimensions HD67507-B2



Gehäuse: PVC
Gewicht: 200g (ca.)

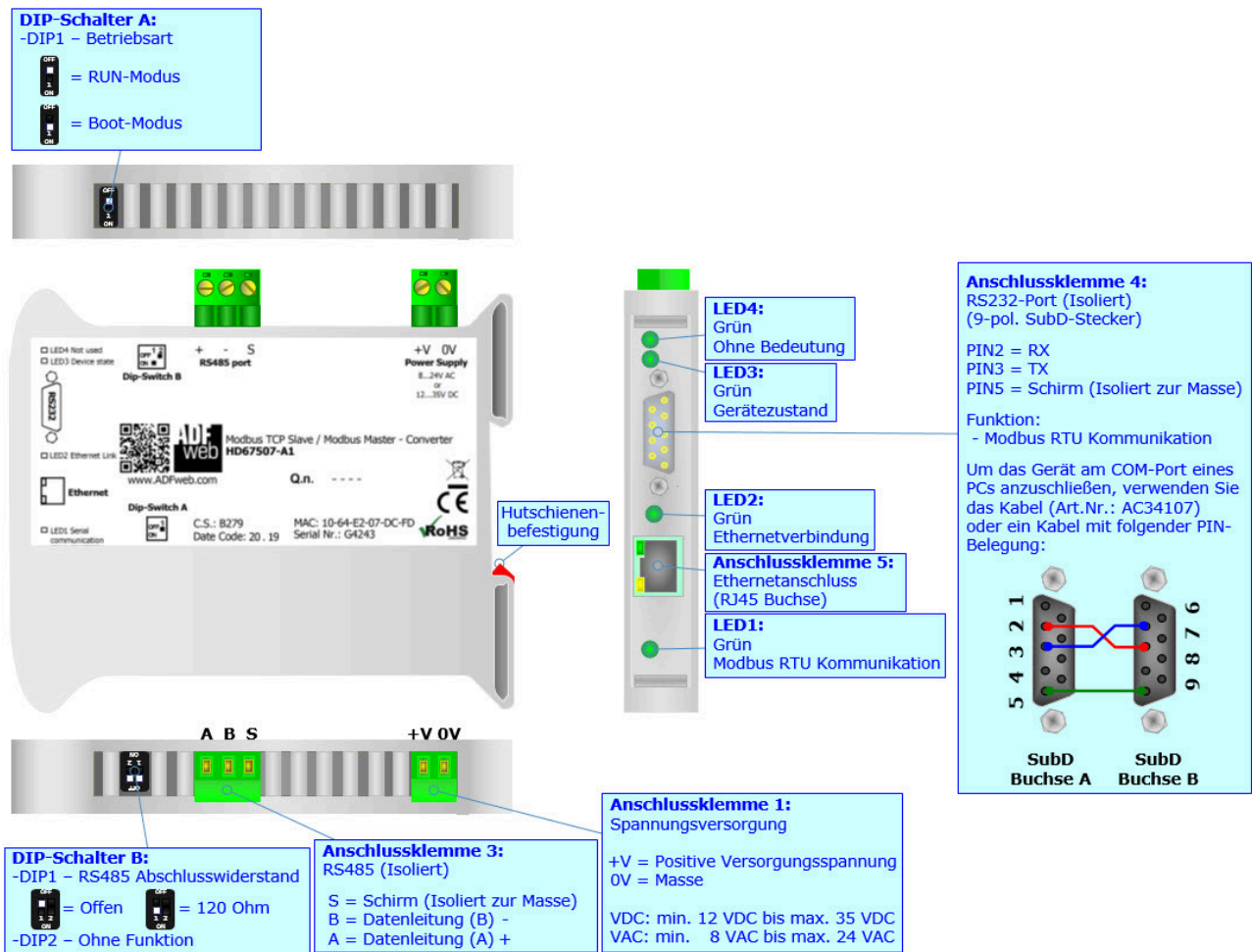
Drawings

Dimensions HD67507-Slim-XXX



Drawings

Connection diagram HD67507-A1



Drawings

Connection diagram HD67507-B2

DIP-Schalter A:

- DIP1 – Muss Auf ON stehen
- DIP2 – Betriebsart



= RUN-Modus



= Boot-Modus

DIP-Schalter B:

- DIP1 – RS485 Abschlusswiderstand



= Offen



= 120 Ohm

- DIP2 – Ohne Funktion

Anschlussklemme 3:

RS485 (Isoliert)

S = Schirm (Isoliert zur Masse)

B = Datenleitung (B) -

A = Datenleitung (A) +

Anschlussklemme 4:

RS232-Port (Isoliert)

(9-pol. SubD-Stecker)

PIN2 = RX

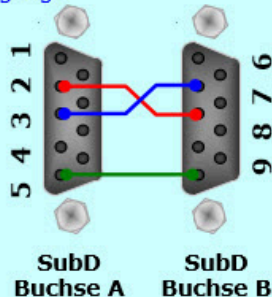
PIN3 = TX

PIN5 = Schirm (Isoliert zur Masse)

Funktion:

- Modbus Kommunikation

Um das Gerät am COM-Port eines PCs anzuschließen, verwenden Sie das Programmierkabel AC34107 oder ein Kabel mit folgender PIN-Belegung:

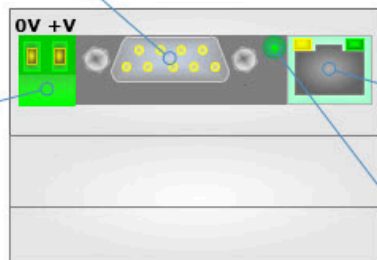
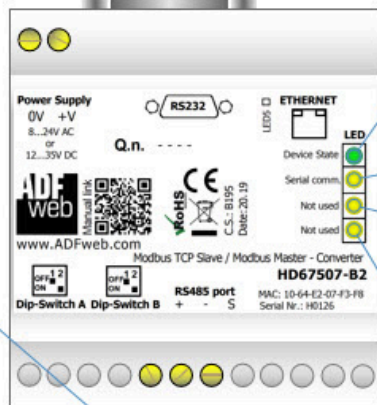
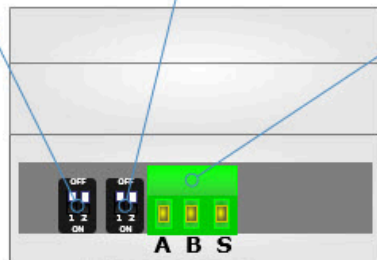


Anschlussklemme 1:

Spannungsversorgung

+V = Positive Versorgungsspannung
0V = Masse

VDC: min. 12 VDC bis max. 35 VDC
VAC: min. 8 VAC bis max. 24 VAC



LED3:

Grün
Gerätezustand

LED1:

Gelb
Serielle Kommunikation

LED4:

Gelb
Ohne Bedeutung

LED5:

Gelb
Ohne Bedeutung

Anschlussklemme 5:

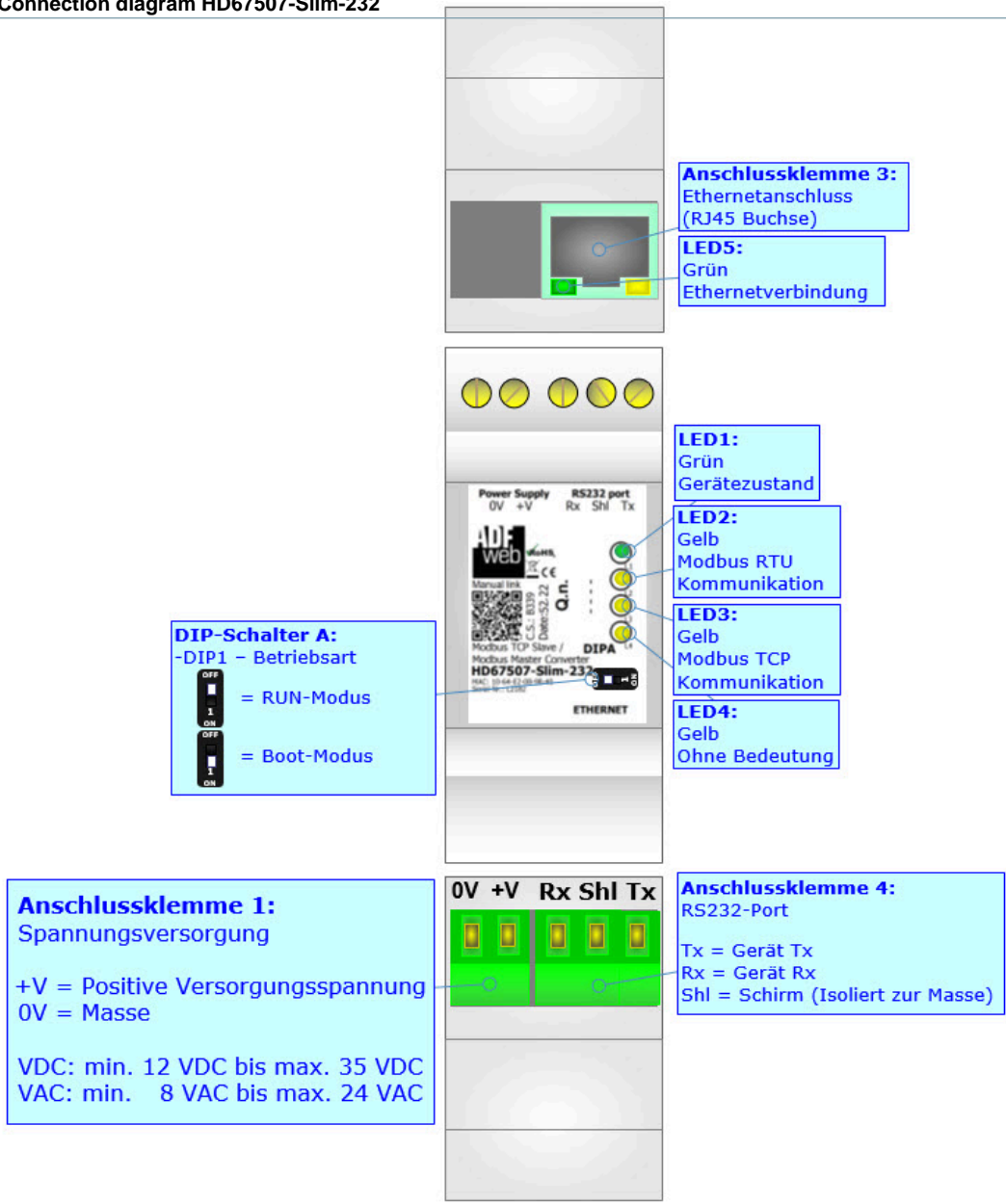
Ethernetanschluss
(RJ45 Buchse)

LED2:

Grün
Ethernetverbindung

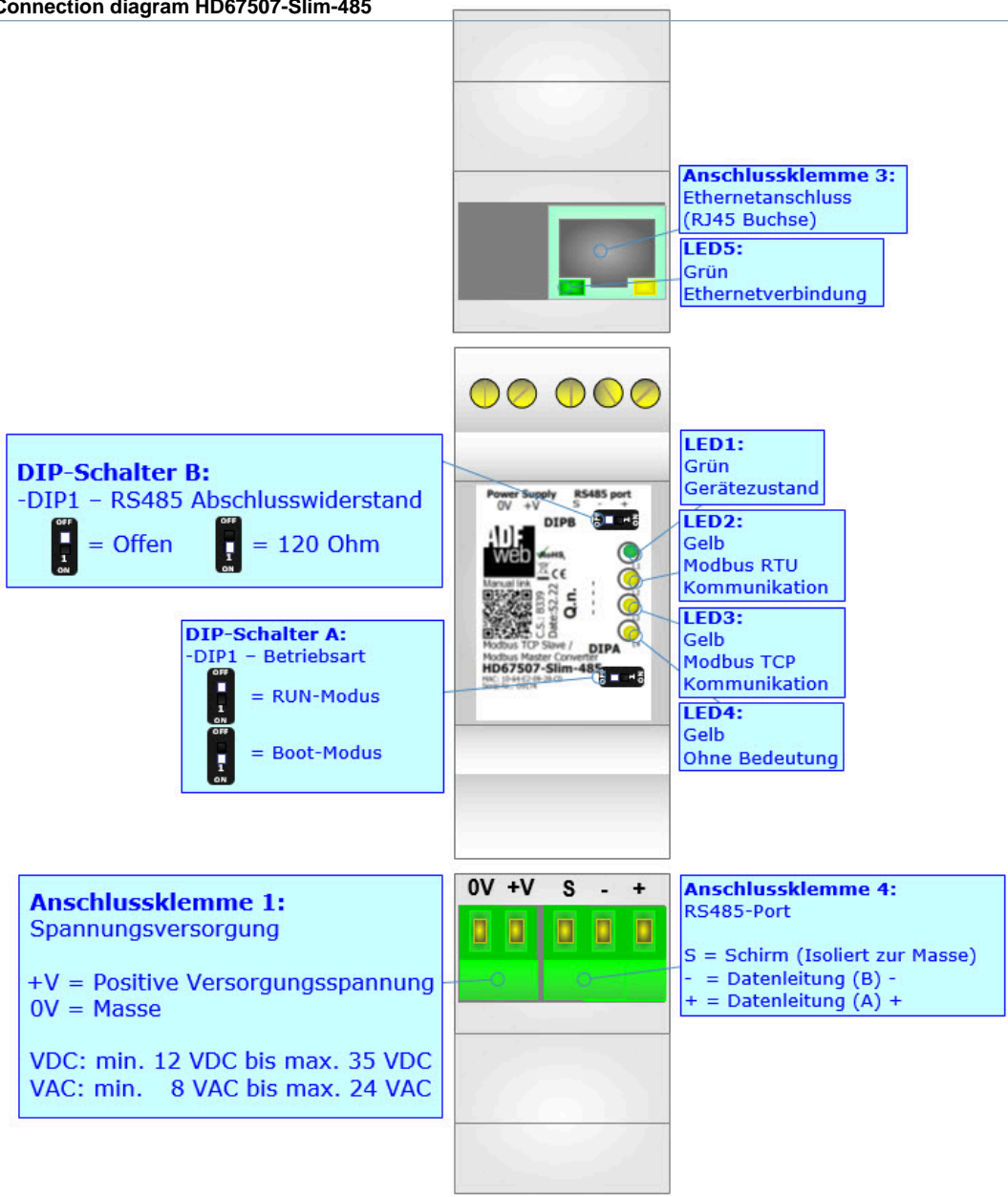
Drawings

Connection diagram HD67507-Slim-232



Drawings

Connection diagram HD67507-Slim-485





Wachendorff Prozesstechnik GmbH & Co. KG
Industriestrasse 7 • 65366 Geisenheim
Germany

Phone: +49 (0) 67 22 / 99 65 - 20
E-Mail: wp@wachendorff.de
www.wachendorff-prozesstechnik.de

