

Gateway M-Bus Master / Modbus TCP Server HD67044-B2-XX



Abbildung ähnlich

- Configurable gateway for free variable management
- High temperature range from -40 °C to +85 °C
- Up to 250 M-Bus devices can be connected
- Galvanic isolation
- Ethernet interface for programming

<https://www.wachendorff-prozesstechnik.de/en/HD67044-B2-XX>

Description

The configurable gateway HD67044-B2 enables communication between up to 250 M-Bus devices and a Modbus TCP network. You can use it to integrate the M-Bus data directly into a higher-level system with little effort. It is easy to configure with the associated PC software via the Ethernet interface. You assign bytes in the Modbus TCP to the M-Bus variables. Installation is simple and reliable on a DIN rail.

Product details

Interfaces:	1x M-Bus (screw terminal, 2-pin) 1x Ethernet port (RJ45 socket)
Data rate:	M-Bus: Max. 38,400 bps Ethernet: 10/ 100 Mbit/s
Galv. separation:	2000 VDC
LED:	4x signal display for supply and communication
Supply:	18 to 35 VDC or 15 to 21 VAC
Power consumption:	HD67044-B2-20: 4 Watt / VA HD67044-B2-40: 5 Watt / VA HD67044-B2-80: 8 Watt / VA HD67044-B2-160: 14 Watt / VA HD67044-B2-250: 30 Watt / VA
Software:	Free configuration software SW67044 for parameterization of the device.
Supported function codes:	03, 04
M-Bus scan function:	The use of the scan function is only possible for devices from hardware version C.S: B244, as well as the latest software version. For further questions and information, please read Technical Note 0105 M-Bus scan function .
Operating temperature:	-40 °C to +85 °C
Humidity:	10% to 80%, non-condensing
Housing:	PVC
Dimensions (WxHxD):	71 mm x 95 mm x 60 mm
Weight:	approx. 200 g
Fastening:	Mounting on DIN rail

Note:

The article description should always be viewed from the perspective of the gateway.

Clients (masters) can be connected to the **HD67044-B2** on the Modbus TCP side.

Customs tariff number: 8517 62 00

Manufacturer: ADFweb.com S.r.l.

Products Order no.

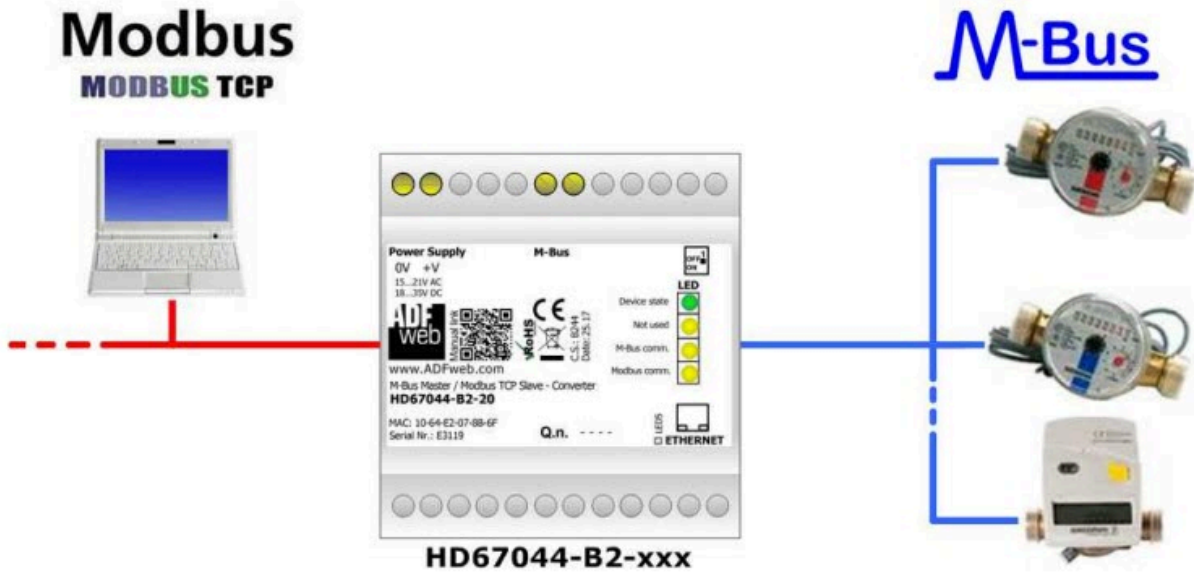
HD67044-B2-20	Gateway M-Bus Master / Modbus TCP Server for up to 20 M-Bus slaves
HD67044-B2-40	Gateway M-Bus Master / Modbus TCP Server for up to 40 M-Bus slaves
HD67044-B2-80	Gateway M-Bus Master / Modbus TCP Server for up to 80 M-Bus slaves
HD67044-B2-160	Gateway M-Bus Master / Modbus TCP Server for up to 160 M-Bus slaves
HD67044-B2-250	Gateway M-Bus Master / Modbus TCP Server for up to 250 M-Bus slaves

Accessories Order no.

AMR4-24	DIN rail power supply unit for building automation, 90 to 264 VAC, 24 VDC, 2.5 A
KABETH10	Patch cable, RJ45 UTP CCA, CAT5e white, 0.3 m
KABETH11	Patch cable, RJ45 UTP CCA, CAT5e white, 1 m
KABETH12	Patch cable, RJ45 UTP CCA, CAT5e white, 2 m

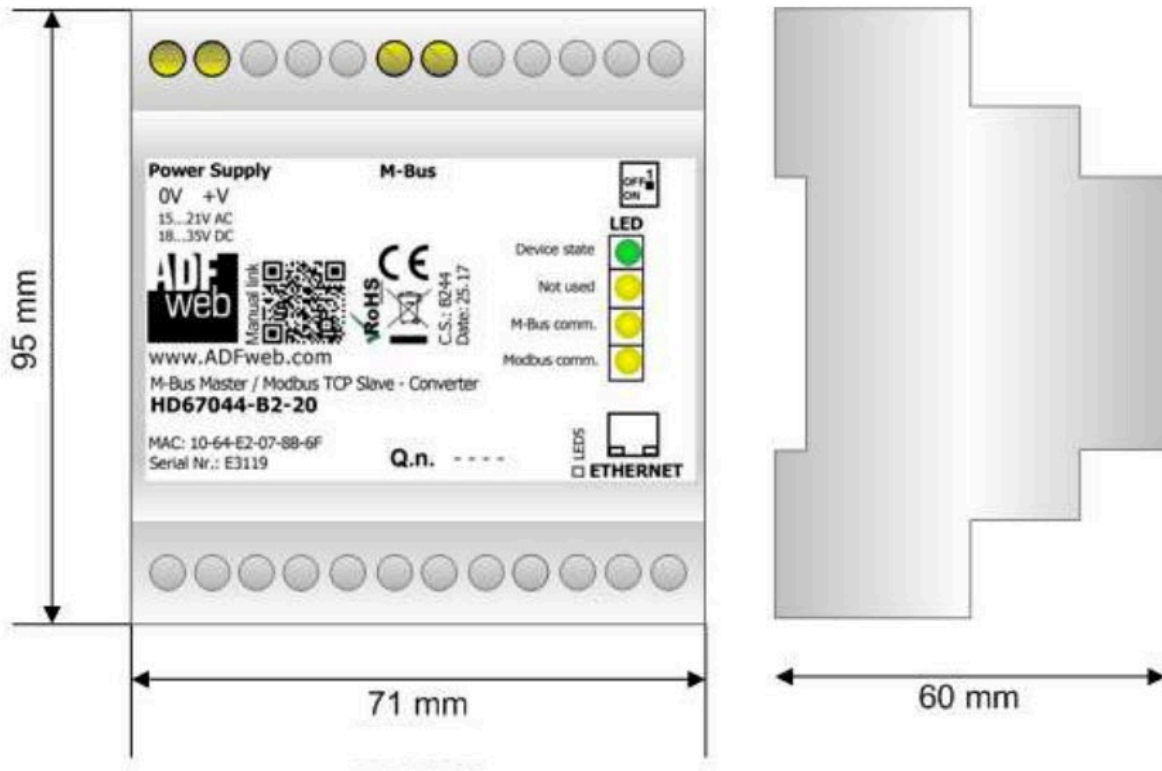
Drawings

Example application



Drawings

Dimensions





Wachendorff Prozesstechnik GmbH & Co. KG
Industriestrasse 7 • 65366 Geisenheim
Germany

Phone: +49 (0) 67 22 / 99 65 - 20
E-Mail: wp@wachendorff.de
www.wachendorff-prozesstechnik.de

