

19 inch Panel PC ARCHMI-919P



- 19" WXGA TFT LCD graphics display 1280 x 1024 pixels
- Processor: Intel® Core™ i3-4010U (1.7 GHz)
- Die-cast aluminum housing
- Flush frame design, IP66 front side
- Fanless cooling system
- Horizontal viewing angle 170°, vertical 165°

<https://www.wachendorff-prozesstechnik.de/en/ARCHMI-919P>

Description

The ARCHMI-9 series is based on Intel Core-i processors

This very powerful and efficient processor family provides sufficient computing power for medium and large applications. The RAM can be expanded to up to 8 GB, enabling more extensive projects such as SCADA or IIoT monitor control applications. The Panel PCs in this series are available in display sizes ranging from 12.1" to 32", with a choice of projected capacitive or resistive touch. The projected capacitive touch enables multi-touch operation with a corresponding operating system. If pressure-sensitive operation is required (e.g. with gloves), the resistive touch is the right choice. The front panels are absolutely flush with the die-cast aluminum housing. The housing is IP66 rated. The unique fanless thermal design of the die-cast aluminum housing enables effective temperature control. The ARCHMI IPC can be optionally equipped with a high-brightness LCD and/or optical bonding for an outstanding display, even under difficult conditions. Expansion cards for additional interfaces or WLAN can also be integrated.

Product details

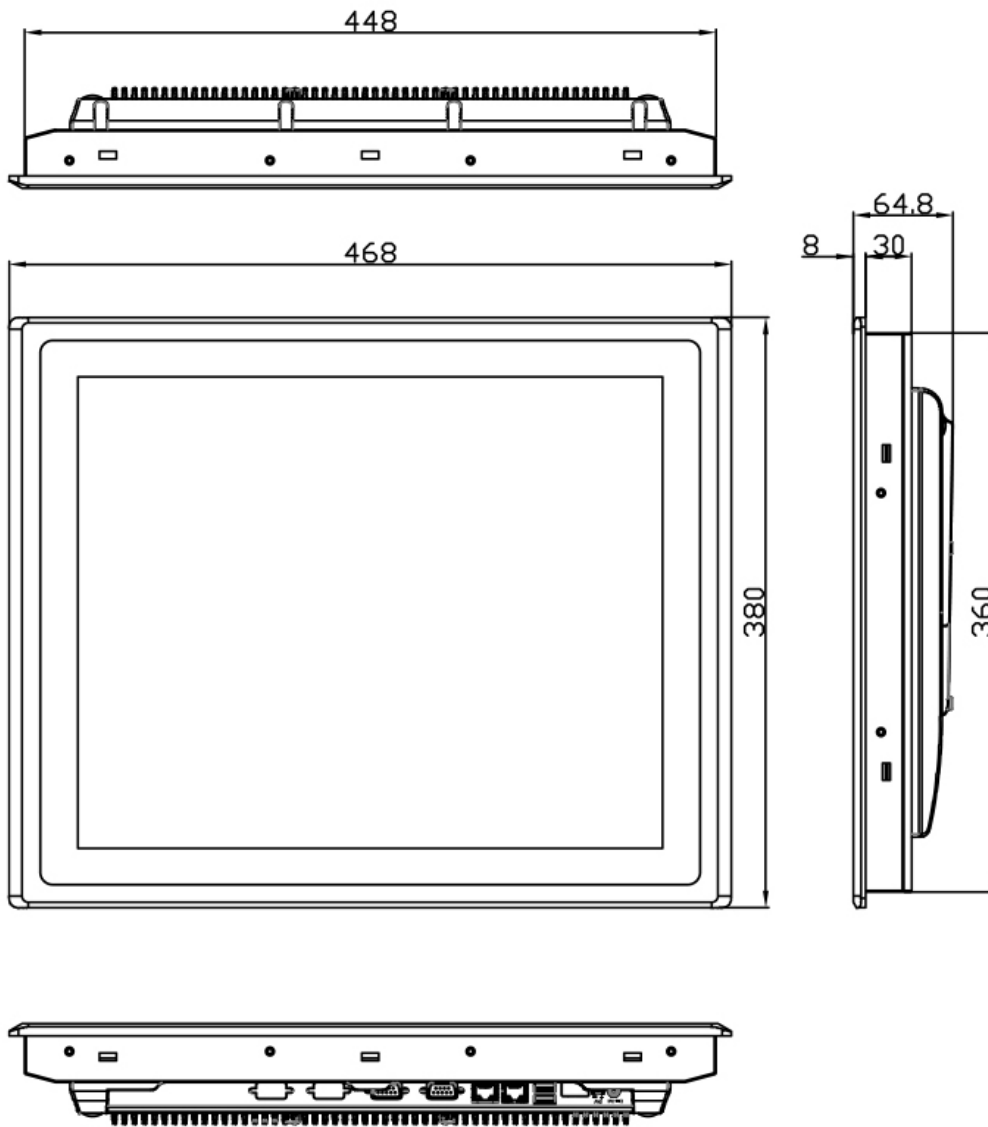
Power supply:	9 VDC to 36 VDC
Power consumption:	max. 60 W
Display:	19" TFT LCD
Aspect ratio:	5:4
Resolution:	1280 x 1024 pixels
Brightness:	350 cd/m ²
Colors:	16,7 M
Reading angle:	H: 170° / V: 165°
Touch screen:	projects capacitively
Processor:	Intel® Core™ i3-4010U (1.7 GHz) Intel® Core™ i5-4310U (up to 3 GHz)
RAM:	4 GB DDR3L 1600 MHz onboard
SSD/HDD:	1x SATA2 2.5"
Additional memory:	1x SD card slot up to 32 GB.
Interfaces:	USB: 2x USB 3.0 type A Serial: COM1: RS232 / RS422 / RS485; COM2: RS232 Ethernet: 2x GbE 10/100/1000 Base T (X), RJ45 Power supply: pluggable 3-pin terminal strip On/off switch: optional plug-in 2-pin terminal strip, see accessories IPC_DIO_2P
Expansion slots:	1 x Mini PCIe half-height (internal) Audio: 3.5 mm jack

Housing:	Die-cast aluminum
Assembly:	VESA 100 x 100; panel mounting
Protection class:	IP66 on the front
Dimensions (WxHxD):	468 mm x 380 mm x 64.8 mm
Weight:	approx. 7.3 kg
Ambient conditions:	Operation: 0 °C to +50 °C Storage: -30 °C to +70 °C 10 % to 90 %r.H, non-condensing
Certifications:	CE/FCC Class A, CB, UL
Scope of delivery:	Device 1 x Mounting material 1 x plug-in power supply unit
Options:	VGA HDMI 2 x USB 2.0 2 x USB 2.0 + 1x LAN 2 x USB 2.0 + 1x COM 2 x USB 2.0 + 1x HDMI 2 x USB 2.0 + 1x COM + 1x Power Switch + 1x Mini PCIe slot full size 2 x COM 2 x CAN (on request) WLAN 2.4GHz ,BT4 WLAN 2.4GHz, 5GHz, BT4 Optical bonding High Brightness Display Smart Battery Extended temperature range WT1 -20°C to +60°C

Operating systems:	Windows 7 Professional for Embedded Systems (FES) 32 Bit Windows 7 Ultimate for Embedded Systems (FES) 32 Bit Windows 7 Professional for Embedded Systems (FES) 64 Bit Windows 7 Ultimate for Embedded Systems (FES) 64 Bit Windows Embedded Standard 7 (P) Windows® Embedded 8.1 Industry Pro (ESD) 32 Bit Windows® Embedded 8.1 Industry Pro (ESD) 64 bit Windows 10 IoT Enterprise 2015 (ESD) 32 bit Windows 10 IoT Enterprise 2015 (ESD) 64 bit Windows 10 IoT Enterprise LTSB 2016 (ESD) (for i3/i5)
Manufacturer:	Aplex Technology Inc.

Drawings

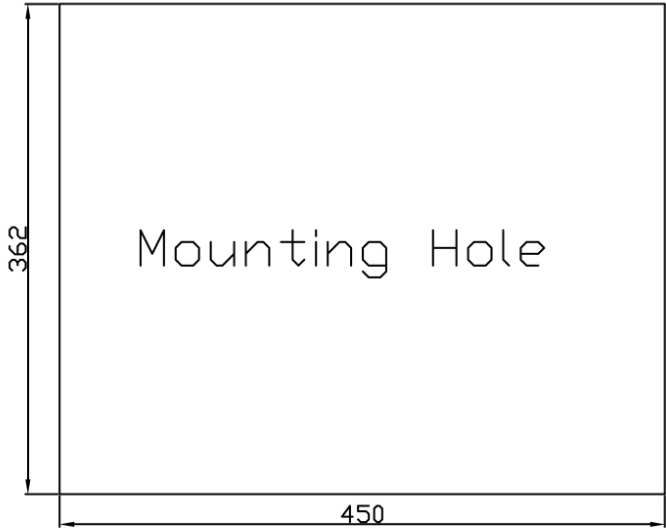
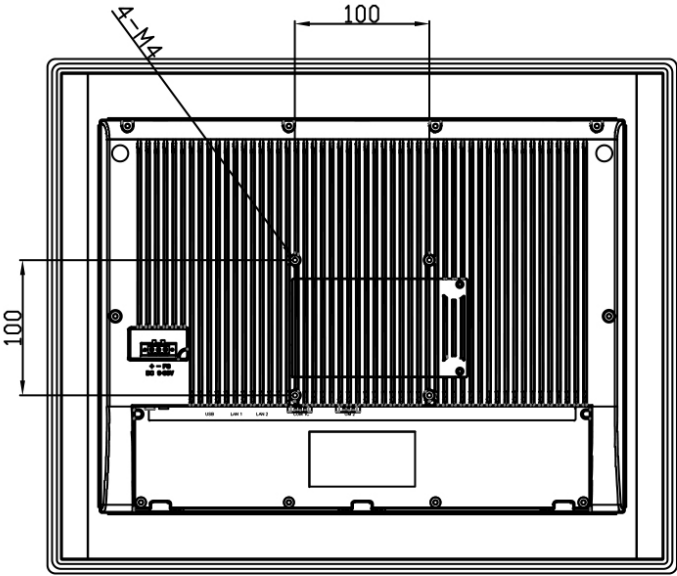
Dimensions 01 (mm):



UNIT: mm
Tolerance: ± 0.5

Drawings

Dimensions 02 (mm):





Wachendorff Prozesstechnik GmbH & Co. KG
Industriestrasse 7 • 65366 Geisenheim
Germany

Phone: +49 (0) 67 22 / 99 65 - 20
E-Mail: wp@wachendorff.de
www.wachendorff-prozesstechnik.de

