

Ethernet Switch, 5 Ports - SLX-5ES-1 Sixnet Networking Series



- 5x 10/100BaseT(X)
- Unmanaged / Plug and Play
- IEEE 802.3, IEEE 802.3u, IEEE 802.3x
- Redundant power input with overvoltage protection
- Operating temperature -40 °C to +85 °C
- Hazardous area (Zone 2), Maritime Rated
- Extremely reliable: MTBF 1,000,000+ h

<https://www.wachendorff-prozesstechnik.de/en/SLX-5ES-1>

Description

The unmanaged industrial Ethernet switches in the Sixnet SL/SLX series have been developed for use in harsh and demanding industrial environments where large temperature differences and physical loads are not unknown. A wide range of variants are available. From Ethernet media converters with 2 ports to switches with 9 connection options - optionally as a combination of RJ45 and fiber ports.

The design of these industrially robust switches is of very high quality and guarantees outstanding reliability. Numerous approvals and certificates offer a wide range of possible applications. The devices in the SL series have a Lexan polycarbonate housing. The SLX series is characterized by an aluminium housing and an extended temperature range. Sixnet switches have been designed for years of uninterrupted operation.

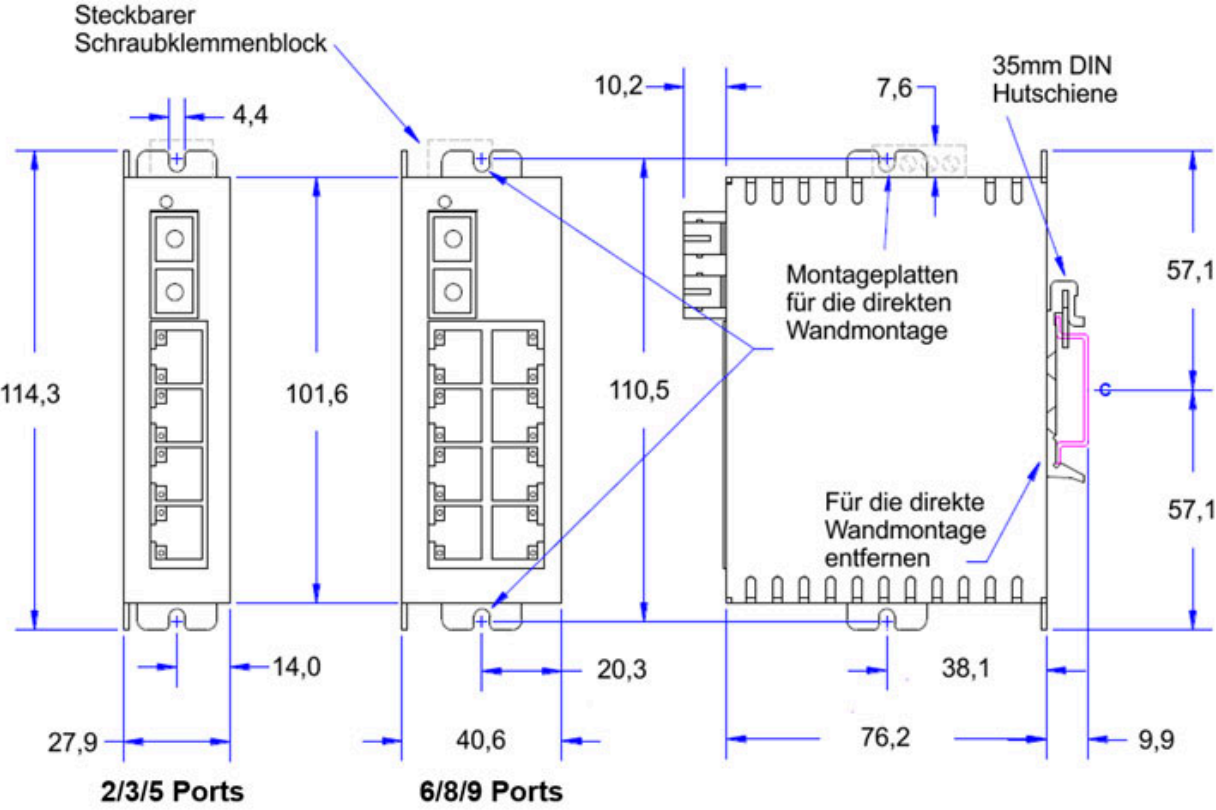
Product details

Operating mode:	Store and Forward
Switching engine:	wire-speed / non-blocking
Ethernet standards:	<ul style="list-style-type: none"> • IEEE 802.3 (10BaseT) • IEEE 802.3u (100BaseTX) • IEEE 802.3x (Full Duplex with flow control)
RJ45 ports:	5x 10/100BaseT(X)
RJ45 - Speed:	Auto-negotiation (10/100 Mbit/s)
RJ45 - Duplex:	Half or full duplex
RJ45 connection:	MDI/MDIX Auto-Crossover / TD/RD Auto-Polarity
RJ45 - Ethernet isolation:	$U_{eff} = 1500 \text{ V}$ for 1 minute
MAC table size:	1024
Memory bandwidth:	3.2 Gbit/s
Latencies:	100 Mbps: 5 μ s + frame time 10 Mbps: 16 μ s + frame time (typical values, load-dependent)
Power supply:	Redundant input terminal block connector with overvoltage protection
Voltage range:	10 to 30 VDC
Power consumption:	2.0 W
Protection (transient):	15,000 watts (peak power)
Protection (spike):	5,000 watts (10x for 10 μ s)
Operating temperature:	-40°C to +85°C (cold start at -40°C)
Storage temperature:	-40°C to +85°C
Humidity:	5 % to 95 % rH (non-condensing)
max. insertion height:	9144 m

Vibration and shock:	IEC60068-2-6
Electrical safety:	UL508/CSA C22.2/14, EN61010-1, CE
EMC:	FCC part 15, ICES-003, EN55022, EN61000-6, CE
Hazardous areas:	UL1604/CSA C22.2/213 (Class I, Div.2), EN60079-15 (Zone 2, Category 3), CE (ATEX)
Maritime:	Marine & offshore per ABS
Protection class:	IP40
MTBF:	1.000.000+ h
Execution:	Aluminum
Dimensions (WxHxD):	27.9 mm x 114.3 mm x 86.1 mm
Weight:	170 gram
Assembly:	DIN rail or wall mounting
Manufacturer:	Red Lion Controls, USA

Drawings

Dimensions





Wachendorff Prozesstechnik GmbH & Co. KG
Industriestrasse 7 • 65366 Geisenheim
Germany

Phone: +49 (0) 67 22 / 99 65 - 20
E-Mail: wp@wachendorff.de
www.wachendorff-prozesstechnik.de

