

Energy meter 80 A M-Bus ECM80-M-MID



- Certified MID version
- For M-Bus communication
- Direct connection up to 80 A
- Fully bidirectional four-quadrant measurements for all energies and powers
- For 3- / 4-wire networks with balanced or unbalanced load
- Class B according to EN 50470-3
- S0 output for energy pulse output

<https://www.wachendorff-prozesstechnik.de/en/ECM80-M-MID>

Description

The ECM80-E-MID is a three-phase energy meter that has MID conformity certification and is therefore suitable for billing purposes. The meter is suitable for the direct connection of conductors up to a current of 80 A per phase and can carry out complete bidirectional four-quadrant measurements for all energies and outputs. It is suitable for 4-wire networks with balanced or unbalanced load and fulfills the accuracy requirements of class B according to EN 50470-3. In addition to the standard S0 interface, the energy meter variant mentioned here has an RS232 interface with the M-BUS protocol.

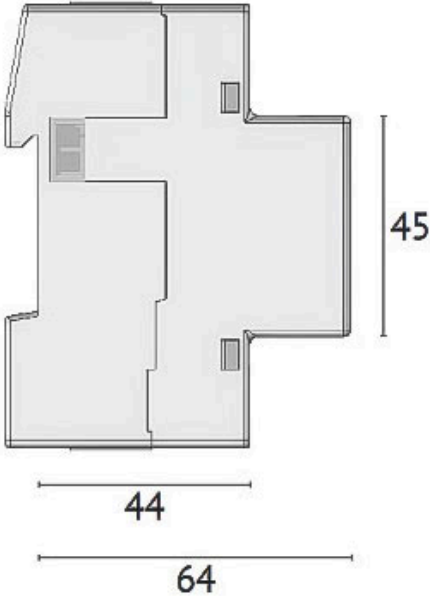
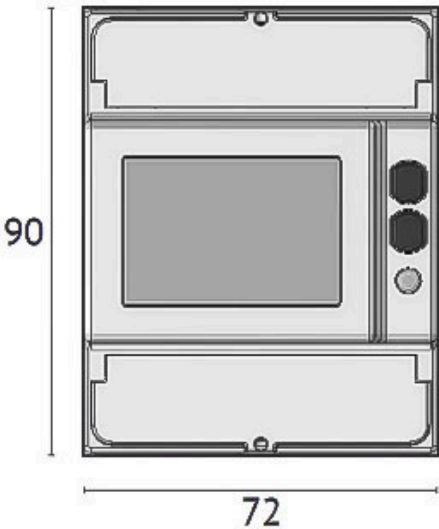
Product details

MID conformity	Yes
Auxiliary voltage	From measuring circuit $U_n \pm 20\%$
Consumption	7.5 VA 0.5 W
Dimensions (W x H x D)	72 mm x 90 mm x 64 mm
Weight	520 g
Operating temperature range	Operation -25 °C to 55 °C
Storage temperature range	Storage -25 °C to 75 °C
Application range relative humidity	Humidity 0 to 80 RH
Assembly	DIN rail mounting
Electrical connection	3/4 ladder
Display type	LCD
Display number of digits	8
Display IP protection class	IP51 (front), IP20 (terminal)
Measuring inputs Conductor cross-section	1.5 mm ² to 6 mm ²
Tariff outputs Conductor cross-section	0.14 mm ² to 2.5 mm ²
Tariff input	Yes
Voltage range Tariff	80 - 276 AC-DC
Metrological LED pulse value	10000 imp. / kWh
Measuring LED pulse duration	10 ± 2 ms
Communication	S0, M-Bus (300 - 38400 bit/s)
Web server	None
Data storage	8 MB
Active energy Accuracy	Class B according to EN 50470-3
Reactive energy accuracy	Class 2 according to IEC/EN 62053-23

Starting current	20 mA
Minimum current	250 mA
Transition current	500 mA
Rated current	5 A
Rated current - load	-
Frequency measurement	50 to 60 Hz
Number of S0 outputs	1
S0 output Maximum current	27 mA
S0 output Maximum voltage	27 DC
S0 output Pulse output	500 Imp. / kWh
S0 output Pulse duration On	50 ± 2 ms
S0 output Pulse duration Off	30 ± 2 ms
Scope of delivery	Counter, manual
Manufacturer	Celsa Messgeräte GmbH

Drawings

Dimensions (mm)





Wachendorff Prozesstechnik GmbH & Co. KG
Industriestrasse 7 • 65366 Geisenheim
Germany

Phone: +49 (0) 67 22 / 99 65 - 20
E-Mail: wp@wachendorff.de
www.wachendorff-prozesstechnik.de

