

Energy meter 6 A Modbus RTU ECM6-S-MID



- Certified MID version
- For RS485 Modbus RTU communication
- For 1 or 5A converters
- Programmable transformer ratio
- Fully bidirectional four-quadrant measurements for all energies and powers
- For 4-wire networks with balanced or unbalanced load
- Class B according to EN 50470-3
- S0 output for energy pulse output

<https://www.wachendorff-prozesstechnik.de/en/ECM6-S-MID>

Description

The ECM6-S-MID is a three-phase energy meter that has MID conformity certification and is therefore suitable for billing purposes. The meter can be operated with 1 A and 5 A transformers, has a programmable wandering ratio and can carry out complete bidirectional four-quadrant measurements for all energies and outputs. It is suitable for 4-wire networks with balanced or unbalanced load and fulfills the accuracy of class B according to EN 50470-3. In addition to the standard S0 interface, the energy meter variant mentioned here has an RS485 interface with the Modbus RTU protocol.

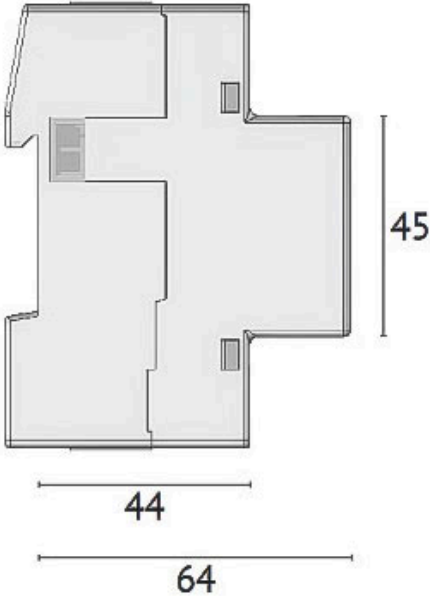
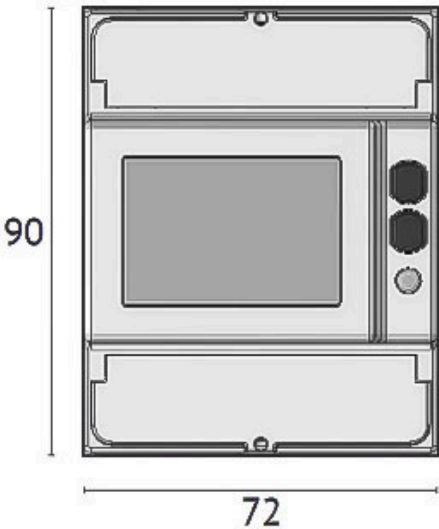
Product details

MID conformity	Yes
Auxiliary voltage	From measuring circuit $U_n \pm 20\%$
Consumption	7.5 VA 0.5 W
Dimensions (W x H x D)	72 mm x 90 mm x 64 mm
Weight	420 g
Operating temperature range	Operation -25 °C to 55 °C
Storage temperature range	Storage -25 °C to 75 °C
Application range relative humidity	Humidity 0 to 80 RH
Assembly	DIN rail mounting
Electrical connection	4 Ladder
Display type	LCD
Display number of digits	8
Display IP protection class	IP51 (front), IP20 (terminal)
Measuring inputs Conductor cross-section	1.5 mm ² to 6 mm ²
Tariff outputs Conductor cross-section	0.14 mm ² to 2.5 mm ²
Tariff input	Yes
Voltage range Tariff	None
Metrological LED pulse value	10000 imp. / kWh
Measuring LED pulse duration	10 ± 2 ms
Communication	S0, Modbus RTU
Web server	None
Data storage	8 MB
Active energy Accuracy	Class B according to EN 50470-3
Reactive energy accuracy	Class 2 according to IEC/EN 62053-23

Starting current	2 mA
Minimum current	10 mA
Transition current	50 mA
Rated current	1 A
Rated current - load	< 0.04 VA
Frequency measurement	50 to 60 Hz
Number of S0 outputs	1
S0 output Maximum current	27 mA
S0 output Maximum voltage	27 DC
S0 output Pulse output	100 Imp. / kWh
S0 output Pulse duration On	50 ± 2 ms
S0 output Pulse duration Off	30 ± 2 ms
Scope of delivery	Counter, manual
Manufacturer	Celsa Messgeräte GmbH

Drawings

Dimensions (mm)





Wachendorff Prozesstechnik GmbH & Co. KG
Industriestrasse 7 • 65366 Geisenheim
Germany

Phone: +49 (0) 67 22 / 99 65 - 20
E-Mail: wp@wachendorff.de
www.wachendorff-prozesstechnik.de

