

Energy meter 40 A Modbus RTU WECM40-S-MID



- Certified MID version
- For RS485 Modbus RTU communication
- Direct connection up to 40 A
- Fully bidirectional 4-quadrant measurements for all energies and powers
- High reliability
- 1 DIN module compact size
- Fast installation
- S0 output for energy pulse output
- LCD display with 7 main digits

<https://www.wachendorff-prozesstechnik.de/en/WECM40-S-MID>

Description

The WECM40-S-MID is a single-phase energy meter that has MID conformity certification and is therefore suitable for billing purposes. The meter is suitable for the direct connection of current conductors up to a current of 40 A and can perform complete bidirectional four-quadrant measurements. It complies with class B accuracy in accordance with EN 50470-3. In addition to the standard S0 interface, the energy meter variant mentioned here has an RS485 interface with the Modbus RTU protocol.

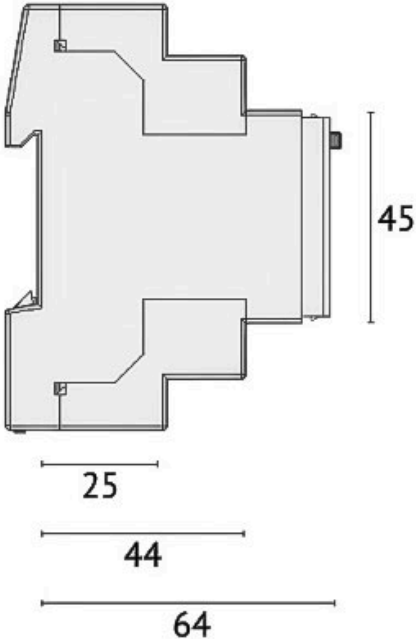
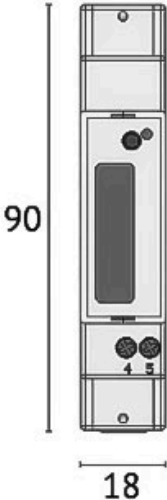
Product details

MID conformity	Yes
Auxiliary voltage	From measuring circuit $U_n \pm 20\%$
Consumption	1.5 VA 1 W
Dimensions (W x H x D)	18 mm x 90 mm x 64 mm
Weight	100 g
Operating temperature range	Operation -25 °C to 55 °C
Storage temperature range	Storage -25 °C to 75 °C
Application range relative humidity	Humidity 0 to 80 RH
Assembly	DIN rail mounting
Electrical connection	2 Ladder
Display type	LCD
Display number of digits	7
Display IP protection class	IP51 (front), IP20 (terminal)
Measuring inputs Conductor cross-section	1.5 mm ² to 6 mm ²
Tariff outputs Conductor cross-section	0.14 mm ² to 2.5 mm ²
Tariff input	No
Voltage range Tariff	None
Metrological LED pulse value	5000 imp. / kWh
Measuring LED pulse duration	4 ± 0.1 ms
Communication	S0, Modbus RTU
Web server	None
Data storage	8 MB
Active energy Accuracy	Class B according to EN 50470-3
Reactive energy accuracy	Class 2 according to IEC/EN 62053-23

Starting current	20 mA
Minimum current	250 mA
Transition current	500 mA
Rated current	5 A
Rated current - load	-
Frequency measurement	50 to 60 Hz
Number of S0 outputs	1
S0 output Maximum current	27 mA
S0 output Maximum voltage	27 DC
S0 output Pulse output	1000 Imp. / kWh
S0 output Pulse duration On	100 ± 0.5 ms
S0 output Pulse duration Off	65 ± 2 ms
Scope of delivery	Counter, manual
Manufacturer	Celsa Messgeräte GmbH

Drawings

Dimensions (mm)





Wachendorff Prozesstechnik GmbH & Co. KG
Industriestrasse 7 • 65366 Geisenheim
Germany

Phone: +49 (0) 67 22 / 99 65 - 20
E-Mail: wp@wachendorff.de
www.wachendorff-prozesstechnik.de

